

TRUCKING

Trucks in Action will be a special feature of AUSTimber 2012

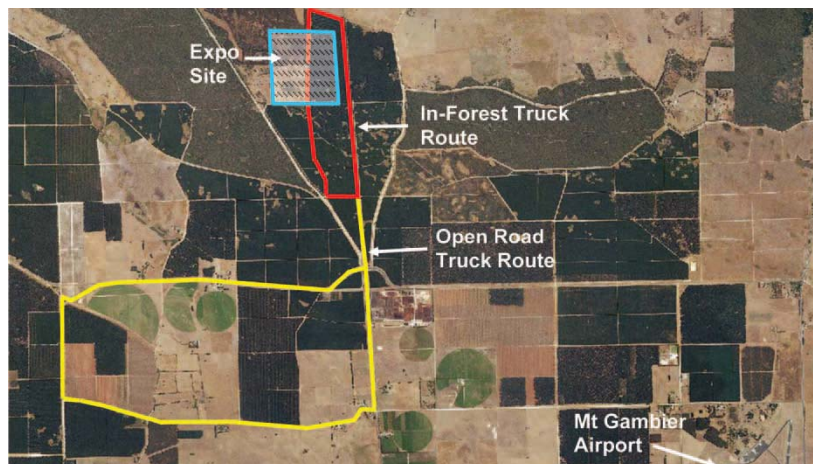
PETER ROBERTS, dealer principal of OG Roberts, has further supported AUSTimber 2012 by committing to demonstrate the Giga Series Isuzu prime movers at the AUSTimber Expo.

The impending expansion of bluegum forest harvesting in the Green Triangle is seen as a “perfect fit” for the Giga Series, which offers a cab over configuration eminently suitable for “B” Double chip haulage.

OG Roberts supported AUSTimber 2008 by providing the staff vehicles necessary for the successful staging of the event and has continued this support for AUSTimber 2012.

The Isuzu Giga range is seen as a perfect choice for in-field harvesting operations, offering excellent power with optional transmissions and first class driver facilities at an extremely competitive price.

The live exhibitions of forest harvesting at AUSTimber 2012 will feature in-field chipping operations in Elders Forestry bluegum plantations, along with log harvesting of ForestrySA pine plantations. In-field chip can now be loaded directly onto trailers, towed by the Isuzu prime movers, giving the logging industry and the general public a first-hand opportunity to view these and other “Trucks in Action”.



■ The Isuzu Giga range





Grinders | Screeners | Shredders | Whole Tree Chippers

Morbark 3800XL Tracked Wood Hog





Neuenhauser 3-Fraction Star Screen



Sales | Service | Support | Spare Parts

Morbark Pacific Pty Ltd
Ph: (07) 3204 1300
Branches · Brisbane · Mackay
· Melbourne · Perth · Wollongong

a member of the **LINCOM** GROUP of companies

Solutions for Contractors :

- Pallets, Wood Waste
- Compost, Mulch
- Demolition Waste
- Green Waste
- Mulch Colouring
- Bio Mass fuel
- Forestry residue
- Land clearing

Exclusively distributed & supported throughout Australia

QLD/NSW: Steve Robinson 0488 422 099
VIC/SA/WA/NT: Ben McQuaid 0417 496 800
Technical Support: David McDermott..... 0438 034 425
Technical Support: Mike Adsit 0419 645 918
info@morbarkpacific.net.au